



Jeep Wrangler JK
MY2007-2018
Predator Front Bar

IMPORTANT! – READ BEFORE INSTALLATION

- When installed in accordance with these instructions, the front protection bar does not affect the operation of the vehicles SRS airbags.
- This product must be installed exactly as per these instructions using only hardware supplied.
- Take a few moments to read instructions thoroughly before beginning work.
- In the event of damage to any component please contact OFFROAD ANIMAL to arrange repair/replacement of components.
- Do not use this product for any vehicle make or model other than that specified on these instructions.
- Do not remove labels from this product.
- This product and its fixings must not be modified in any way unless stated in these fitting instructions.
- The installation of this product is recommended for trained personnel.
- These instructions are correct at time of publication. OFFROAD ANIMAL cannot be held responsible for the impact of any changes subsequently made by the vehicle manufacturer. If you find something has changed please contact us to let us know!
- During installation it is the duty of the installer to check correct operation/clearances of all components.
- If Instructions are to be printed for reference in the workshop, it is recommended that they are printed in colour, for best legibility.
- Estimated install time: 2 hours

GENERAL CARE AND MAINTENANCE

Only wash the product with a PH neutral car wash to prevent paint damage and discolouration.

Plastic parts may be maintained with silicone spray.

Do not use acidic or alkaline based cleaning products.

It is important to perform regular checks (pre trip or on an annual basis) on the installed product. Checks include:

- Visual inspection for damage (eg. cracks, chips, dents etc.)
- Electrical wiring is not rubbing anything or worn out
- Bolts are torqued to correct specification (see torque guide below)

For touching up small stone chips, Offroad Animal recommends the following paint products:

- Dupli-Color Trim & Bumper Paint Black (TB101)
- VHT Hood, Bumper & Trim Paint Black (SP27)

BOLT TORQUE SETTINGS

Use the following bolt torques on all general fasteners, unless otherwise specified.

GENERAL FASTENERS	
Size	Torque Nm
M5	5 Nm
M6	9 Nm
M8	22 Nm
M10	44 Nm
M12	77 Nm

Use the following bolt torques on all structural front bar mount and tow point fasteners, and rear towbar fasteners, unless otherwise specified.

FRONT BAR MOUNTS AND TOW POINTS + REAR TOWBAR	
Size	Torque Nm
M10	57 Nm
M12	100 Nm
M14	164 Nm
M16	248 Nm

Always use a torque wrench to set correct torque settings. Ensure torque wrench is set to Nm unit of measurement. Otherwise perform conversion to lb-ft.

PARTS LISTING

IMPORTANT: Check all parts are present before beginning work! Contact OFFROAD ANIMAL if something is missing.

Main Parts – In the Box

Qty	Part Number	Description	Image
1	FB-JWR-JK-07-PR-ASM1	JK Bull bar Predator weldment	
1	B-0106R	Fog light mount LH	
1	B-0106L	Fog light mount RH	
1	B-0107L	JK wing brace LH	
1	B-0107R	JK wing brace RH	
1	M-0002L	Light Cover Mesh LH	

1	M-0002R	Light Cover Mesh RH	
1	FB-JWR-JK-07-PR-ADRCP	ADR Compliance Plate JK BAR	
OPTIONAL ACCESSORIES			
1	B-0110	JK winch delete plate	
1	TB-COM-JK-ASM1	Top tube JK stealth	
1	TB-COM-JK-RD-ASM1	JK ROUND TUBE 3 IN	
1	SKID PLATE KIT U-0004	JK skid plate	
2	SKID PLATE KIT NP-COM-M10-190-ASM0	M10 LOLLYPOP NUT PLATE 190MM LONG	
1	SKID PLATE KIT B-0109L	SKID PLATE MNT BRACKET LH	
1	SKID PLATE KIT B-0109R	SKID PLATE MNT BRACKET RH	

Small Parts – Contained in Small Parts Kit Bag

Qty	Part Number	Description
8	M10 x 30	M10 x 30 Hex Bolt Z/p
8	M10 SW	M10 Spring Washer
8	M10 FW	M10 Flat Washer
8	M6x16 bhcs bz	M6 x 16 Button Head Cap screw black zinc
8	M6 FW bz	M6 Flat washer black zinc
8	M6 FN	M6 Flange nut
4	M8 FW BZ	M8 flat washer black zinc
4	M8 x 20 BHCS BZ	M8 x 20 button head cap screw black zinc
10	M8 FN	M8 Flange nut
6	M8 x 25	M8 x 25 Hex bolt zp
6	M8 FW	M8 Flat washer
8	M4 x 20 Pan	M4 x20 Pan head screw Philips
8	M4 FN	M4 flange nut
1	FB-JWR-JK-07-PR-ADRCP	ADR Compliance plate JK bar
1	ORA logo	Offroad animal logo plate

Small Parts kit for Optional Skid Plate

Qty	Part Number	Description
4	M8 x 30 BHCS BZ	M8 x 30 Button Head Cap Screw Black Zinc
4	M8 FW BZ	M8 flat washer black zinc
2	M10 x 25 BHCS	M10 x 25 Button head cap screw ZP
4	M10 FW	M10 Flat washer
2	M10 FN	M10 Flange nut
2	M10 x 30	M10 x 30 hex bolt zp

Small Parts Kit for Optional Winch Delete Plate

Qty	Part Number	Description
4	M6 FN	M6 flange nut
4	M6 x 20 BHCS BZ	M6 x 20 Button head cap screw black zinc
4	M6 FW BZ	M6 flat washer black zinc

Small Parts Kit for Optional Stealth Top Tube

Qty	Part Number	Description
2	M10 FW	M10 Flat washer
2	M10 x 30	M10 x 30 Hex bolt zinc plate
2	M10 NY	M10 Nyloc Nut
2	M10 SW	M10 spring washer

Small Parts Kit for Optional Round Top Tube

Qty	Part Number	Description
2	M12 FW	M12 Flat washer
2	M12 x 30	M12 x 30 Hex bolt zinc plate
2	M12 SW	M12 Spring washer

TOOLS REQUIRED

The following tools will be required to install the product.

Hand Tools	Power Tools	Workshop Equipment
Hex (Allen) Key Set 4-6mm	Electric/Air Impact Driver (Optional)	Black paint
Metric Socket Set 10-19mm		
Socket Extension Bar	Angle grinder (depending on winch)	
Metric Spanner Set 10-19mm		
Trim Removal Tool		
Plastic Auto Trim Tool Set		
Flat Blade Screwdriver Set		
Phillips Head Screwdriver Set		
Utility Knife		
Pliers		

WORKSHOP SAFETY

It is the responsibility of the installer to always complete works in a safe manner. Make sure the following safety equipment is available and precautions are observed whilst fitting this product.

<p>Hearing Protection</p> 	<p>Always wear ear protection when using power tools.</p>
<p>Eye Protection</p> 	<p>Ensure eye protection is always worn when cutting or drilling.</p>
<p>Manual Handling</p> 	<p>Do not attempt to lift bar assemblies or rock sliders on your own.</p> <p>Always use two people to lift or use mechanical Lifting aid such as hydraulic lifting trolley.</p>
<p>Vehicle Support</p> 	<p>Always ensure vehicle is properly supported when working on it. Do not attempt to fit products whilst suspension work is being carried out. Do not work under a vehicle supported only by a jack.</p>



1. Start by removing screws behind fog lights

TOOLS REQUIRED

Phillips head screwdriver

FASTENERS

Discard



2. Unplug loom for fog lights.

TOOLS REQUIRED**FASTENERS**



3. Remove 2x clips in front of grille with trim tool or flat blade screwdriver.

TOOLS REQUIRED

Trim tool
or
Flat head screwdriver

FASTENERS

Discard



4. Behind bumper at edges you will need to pry up piece shown

TOOLS REQUIRED

Trim tool
or
Flat head screwdriver

FASTENERS



5. Remove panel shown, but tilting it up and angling it out.

TOOLS REQUIRED**FASTENERS**



6. Remove 8x M10 hex nuts holding bumper on to chassis.

TOOLS REQUIRED

16mm socket and spanner

FASTENERS

Discard



7. Pull bumper away from chassis and pry off loom retaining clips with multigrips or screwdriver.

TOOLS REQUIRED

Trim tool
or
Flat head screwdriver
or
Multi grips

FASTENERS



8. Here is what your front end will look like with bumper removed.

TOOLS REQUIRED**FASTENERS**



9. Depending on winch fitting you may need to trim part of chassis shown. Best is to test fit bull bar then drop winch in place and see if it contacts chassis.

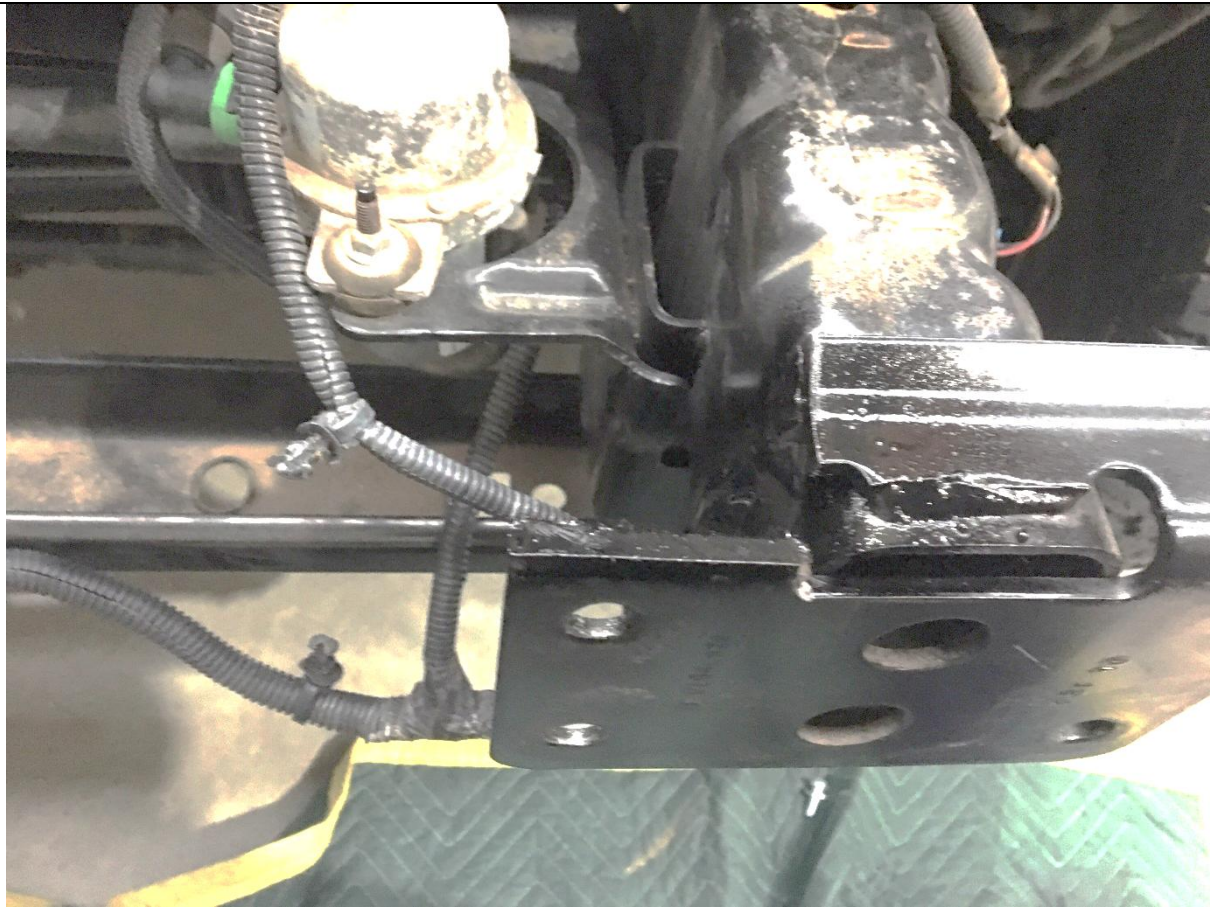
If so, mark chassis with paint pen and cut with angle grinder.

10. Remember to paint exposed cut edges. If winch clears chassis skip this and next step.

TOOLS REQUIRED

Paint pen
Angle grinder

FASTENERS



11. If cutting chassis don't forget to paint exposed edges.

TOOLS REQUIRED

Black Paint

FASTENERS

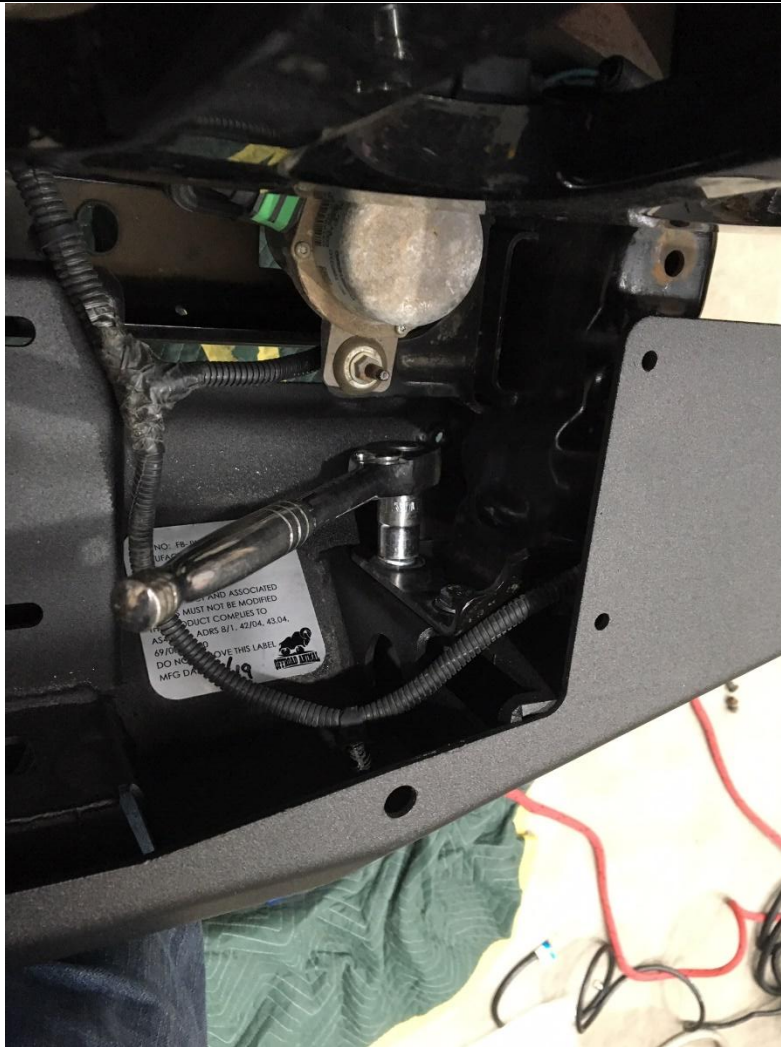


12. Also, winches will require the thread on the vacuum pump bolt to be trimmed. Drop winch on and see if it contacts this thread (most winches will not touch) If it does though, trim with angle grinder.

TOOLS REQUIRED

Angle Grinder

FASTENERS



13. Put bull bar on to vehicle and use 4x M10x30 bolts, spring washers and flat washers to secure LHS to vehicle.

TOOLS REQUIRED

16/17mm socket/spanner

FASTENERS

4x M10x30 hex bolt
4x M10 spring washer
4x M10 flat washer



14. Re fit horn to original location on RHS chassis horn and use M10 bolts as per LHS. If fitting a winch push the horn down as far as possible with your hand bending its bracket.

TOOLS REQUIRED

16/17mm socket/spanner

FASTENERS

4x M10x30 hex bolt
4x M10 spring washer
4x M10 flat washer



15. If fitting factory fog lights, do so now to supplied brackets using M4x12 pan head screws and flange nuts.

TOOLS REQUIRED

Phillips head screwdriver

FASTENERS

8x M4x12 pan head screw
8x M4 flange nut



16. Next fit fog light bracket to mesh panel and secure with 1x M8x25 hex bolt, flat washer and flange nut on the top. The front will be secured through bar in next step.

TOOLS REQUIRED

13mm socket or spanner

FASTENERS

2x M8x25 hex bolt
2x M8 flat washer
2x M8 flange nut



17. Position light and mesh up to bar from behind and secure with 4x M6x16 black button head bolts, black washers and flange nuts.

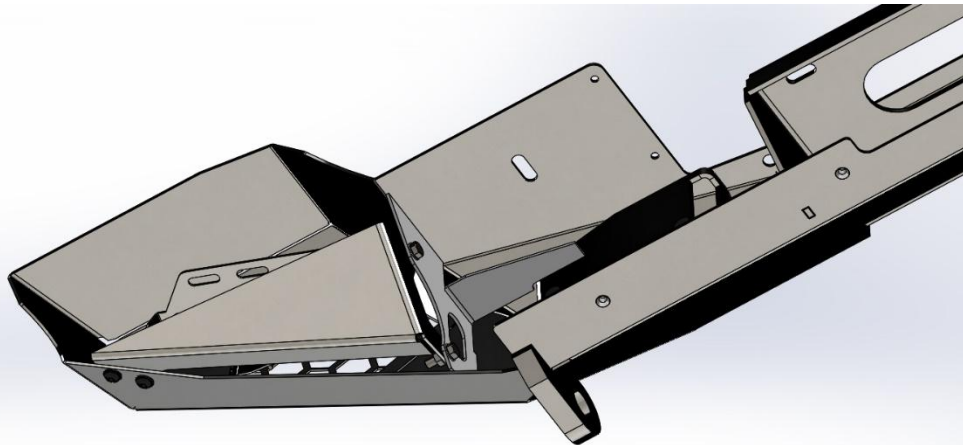
18. Repeat for other side

TOOLS REQUIRED

4mm Allen Key

FASTENERS

8x M6x16 black button head
8x M6 black washer
8x M6 flange nut



19. Position wing brace as shown.

Secure with M8x20 black button head bolts, black washers and flange nuts on the outer end.

Secure with M8x25 hex bolts, flat washers and flange nuts on the inner end.

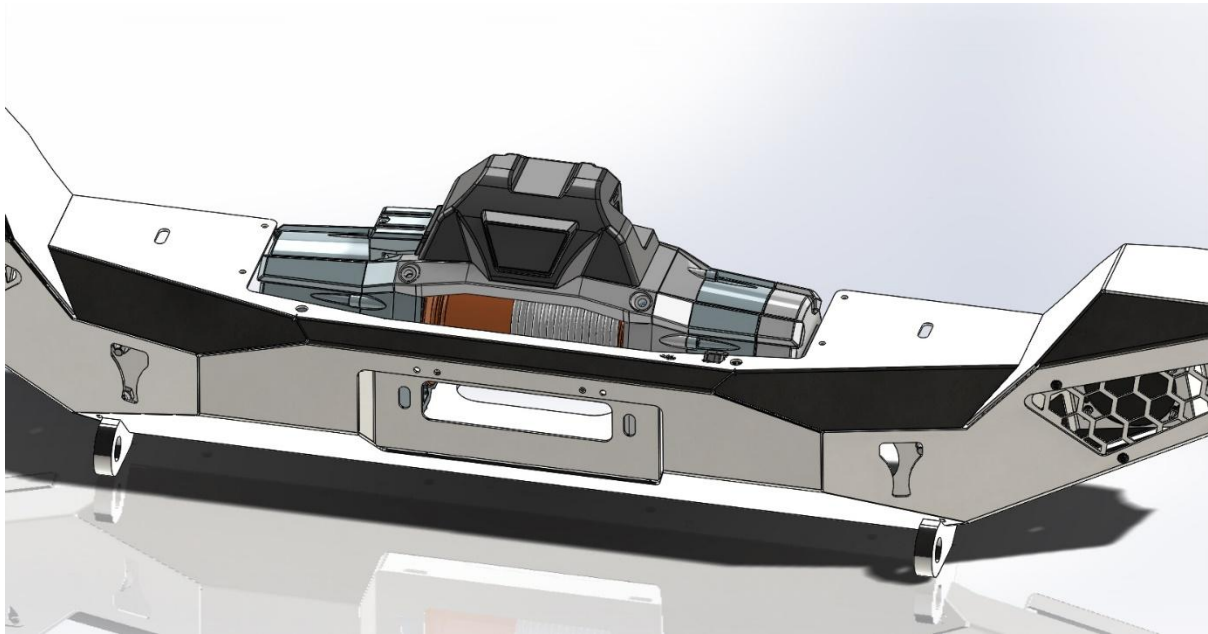
20. Repeat for other side.

TOOLS REQUIRED

5mm Allen Key
13mm Socket or spanner

FASTENERS

4x M8x20 black button head
4x M8 black washer
4x M8x25 hex bolt
4x M8 flat washer
8x M8 flange nut



21. If fitting a winch drop winch in from top, and use bolts supplied with winch to secure to cradle from underneath.

TOOLS REQUIRED

Refer to winch instructions

FASTENERS

Supplied with winch



22. Fit winch fairlead as shown with hardware supplied with winch.

TOOLS REQUIRED

Refer to winch instructions

FASTENERS

Supplied with winch



23. If fitting optional stealth hoop, position it on top as shown and secure with M10 hardware, with nut from below.

24. Put logo plate on the front.

TOOLS REQUIRED

16/17mm spanner

FASTENERS

2x M10x30 hex
2x M10 spring washer
2x M10 flat washer
2x M10 Nyloc nut



25. If fitting Optional round top hoop, fit as shown, with M12 hardware coming from underneath

TOOLS REQUIRED

18/19mm spanner

FASTENERS

2x M12x30 hex bolt
2x M12 spring washer
2x M12 flat washer



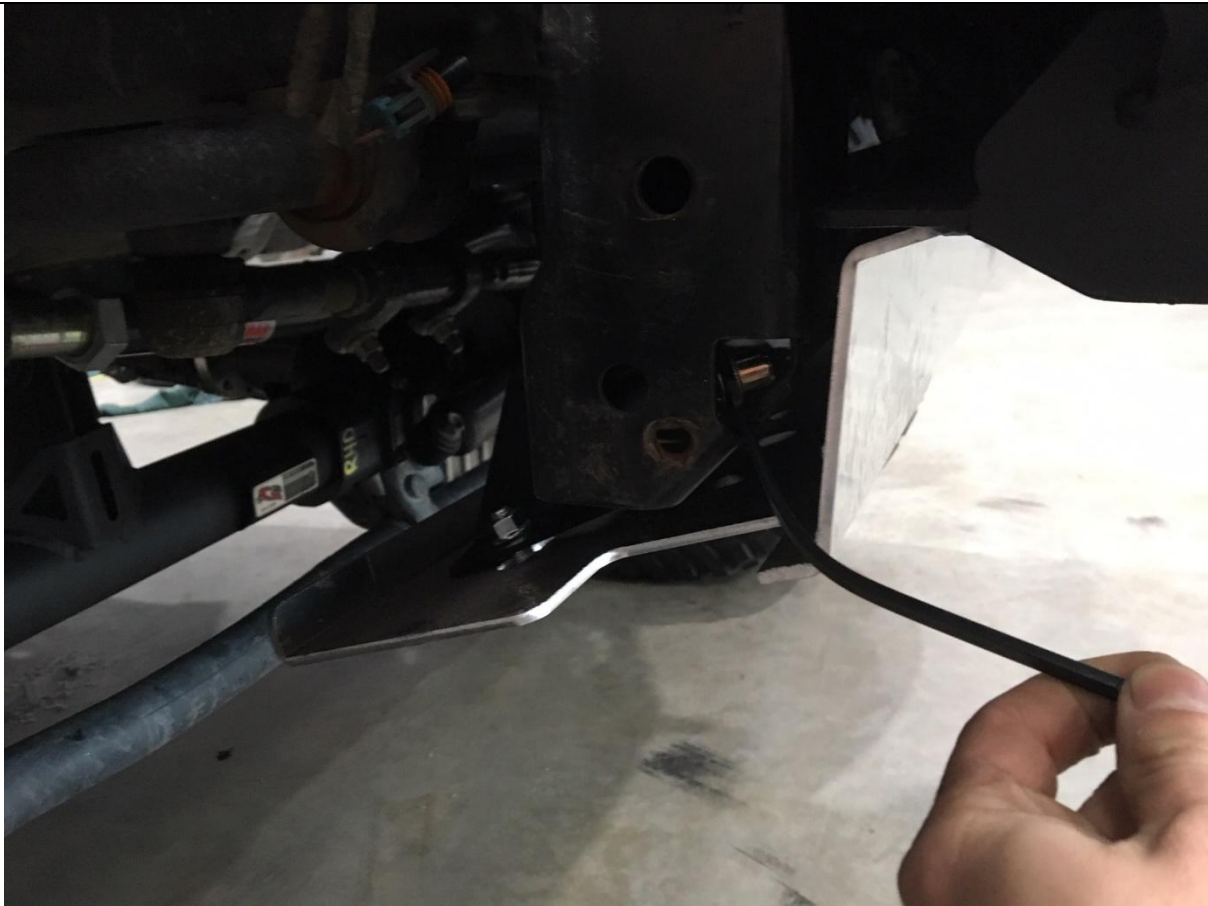
26. If fitting optional skid plate, hold plate up to bottom of bull bar and start the 4x M8x30 button head cap screws with washers to hold plate in place.

TOOLS REQUIRED

5mm Allen key

FASTENERS

4x M8x30 button head bolt
4x M8 flat washer



27. Position Skid plate mount bracket as shown. Secure to skid plate with 2x M10x25 button head bolts, washers and flange nuts. Leave loose for the moment.

Repeat for other side.

28. Bend the stem on the nut plate position through gap as shown, and secure mount bracket to cross member with M10x30 hex bolt and washer.

29. Once all in position torque up all bolts securing skid plate to bar and vehicle.

TOOLS REQUIRED

6mm Allen key
16mm socket or spanner

FASTENERS

2x M10x30 hex bolt
2x M10x25 button head bolt
4x M10 flat washer
2x M10 lollipop nut plate
2x M10 flange nut



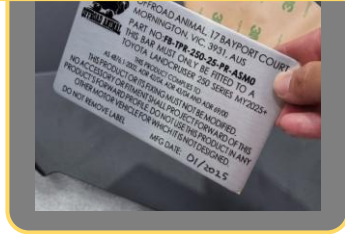
30. Offroad Animal suggest purchasing our Number plate flip and fitting as shown.
31. Otherwise, fit number plate to front face of bar with M6x20 hex bolt washer and flange nuts.

TOOLS REQUIRED

10mm spanner or socket

FASTENERS

2x M6x 20 hex bolt
2x M6 flat washer
2x M6 flange nut



32. Fit your compliance plate supplied underneath somewhere not in your face but visible if the fuzz wants to look at it to prove your bar is ADR compliant.

33. You're now finished, go out and enjoy your new bull bar.

TOOLS REQUIRED

FASTENERS